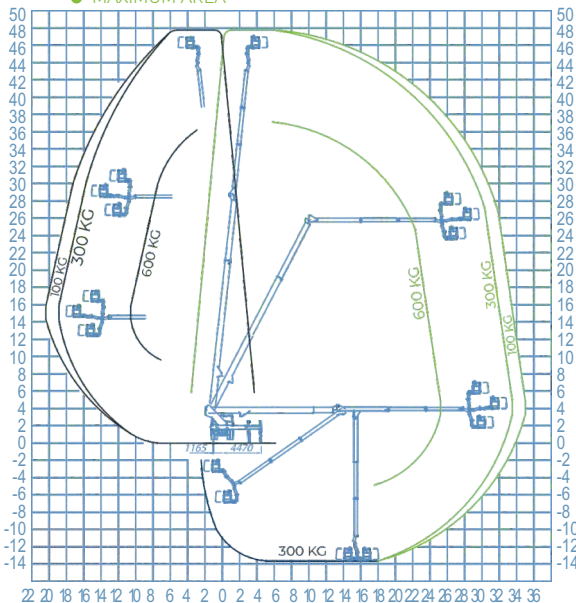


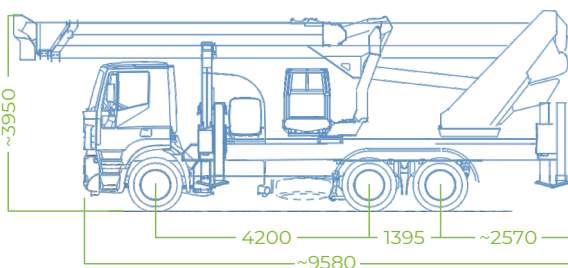
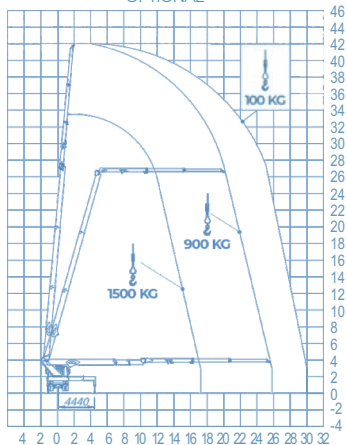


WORKING DIAGRAM

- WORKING AREA WITH IN-SHAPE STABILIZATION
- MAXIMUM AREA



OPTIONAL



IVECO S-WAY

INFO



OUTRIGGERS
HE+HE



WORKING HEIGHT
47,70 m



BASKET HEIGHT
45,70 m



MAX OUTREACH
35,00 m



BASKET LOAD CAPACITY
600 kg



BASKET SIZE
2200/3600x900x1100 mm



BASKET ROTATION
180° + 180°



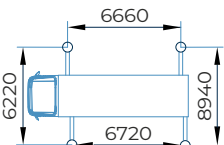
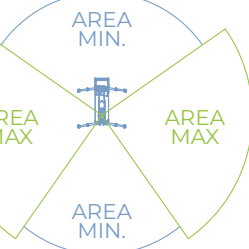
CONTROLS
Electric



TURRET ROTATION
700°



GVW
26 ton



DIMENSIONS
STABILISERS
WITH MAX AREA

STANDARD ACCESSORIES



DATA SHEET

- SOCAGE convertible basket possibility (Eternit)
- 2nd Jib 180° manual rotation
- Possibility of winch on removable JIB
- Automatic stabilization
- Partially stabilized working areas
- Automatic closing
- Basket control station with console on Socage design including joystick and 7 "LCD display with real-time information
- Intercom with headphones for basket-ground communication
- Main and auxiliary motor start/stop control from the basket
- Multifunction radio remote control for emergency control of the aerial part from the ground and stabilization
- 2 fixed roto-lamp on the vehicle cabin
- Socket 230V/400V
- Heat exchanger on the hydraulic system
- 2 folding sides, 2 fixed (h 150 mm)
- 4 plates to stand to the ground
- Anti-corrosion treatment on unpainted components



SAFETY DATA

- Emergency button
- Emergency manual hand pump
- Automatic PTO deactivation
- Cross-check of open stabilizers
- Anemometer
- Load limiter in the basket
- Moment limiter with double safety and control of correct operation
- Multi axial device for visual control of frame stabilization
- Emergency descent with electric pump (in the absence of the auxiliary motor)
- Rotation brake of the turret with automatic insertion
- Hydraulic system with differentiated filtering with high efficiency filters both on the delivery lines and on the return lines
- Multifunction radio control for emergency control
- Automatism for rotation lock with extension of the stabilizers on one side only
- Chassis flatness sensor
- Flanged block valves

